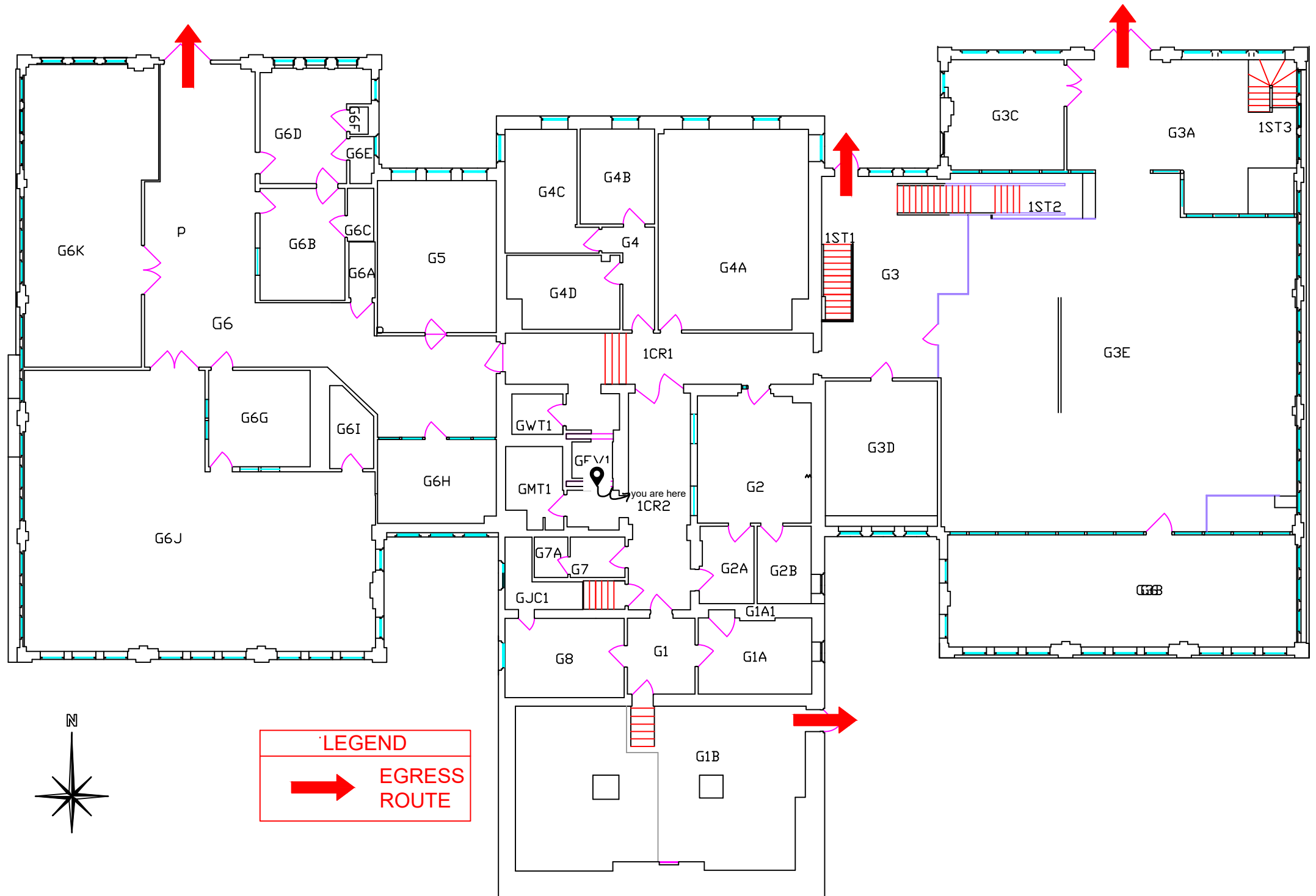


Interdisciplinary Engineering building

1215 N. Pine St.  
Rolla, MO 65409  
GIS: 37.953986, -91.772028

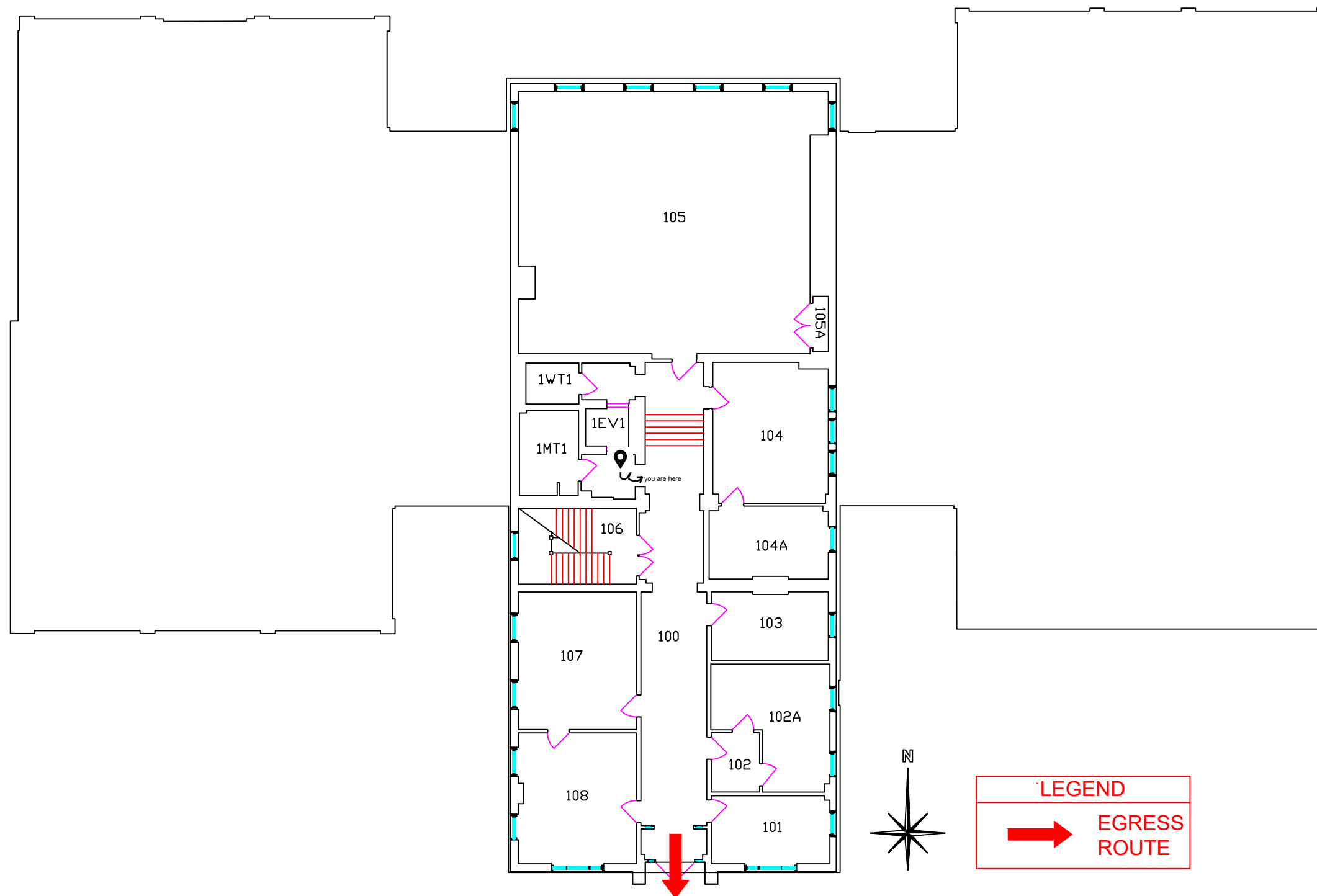
Bldg. Code: R0013  
Rev. Date: 07/13/2022  
Sheet Size: Ledger  
Scale: 1/16" = 1'-0"

Basement  
Sheet 1 of 5



## Interdisciplinary Engineering Building

1215 N. Pine St.  
Rolla, MO 65409  
GIS: 37.953986, -91.772028

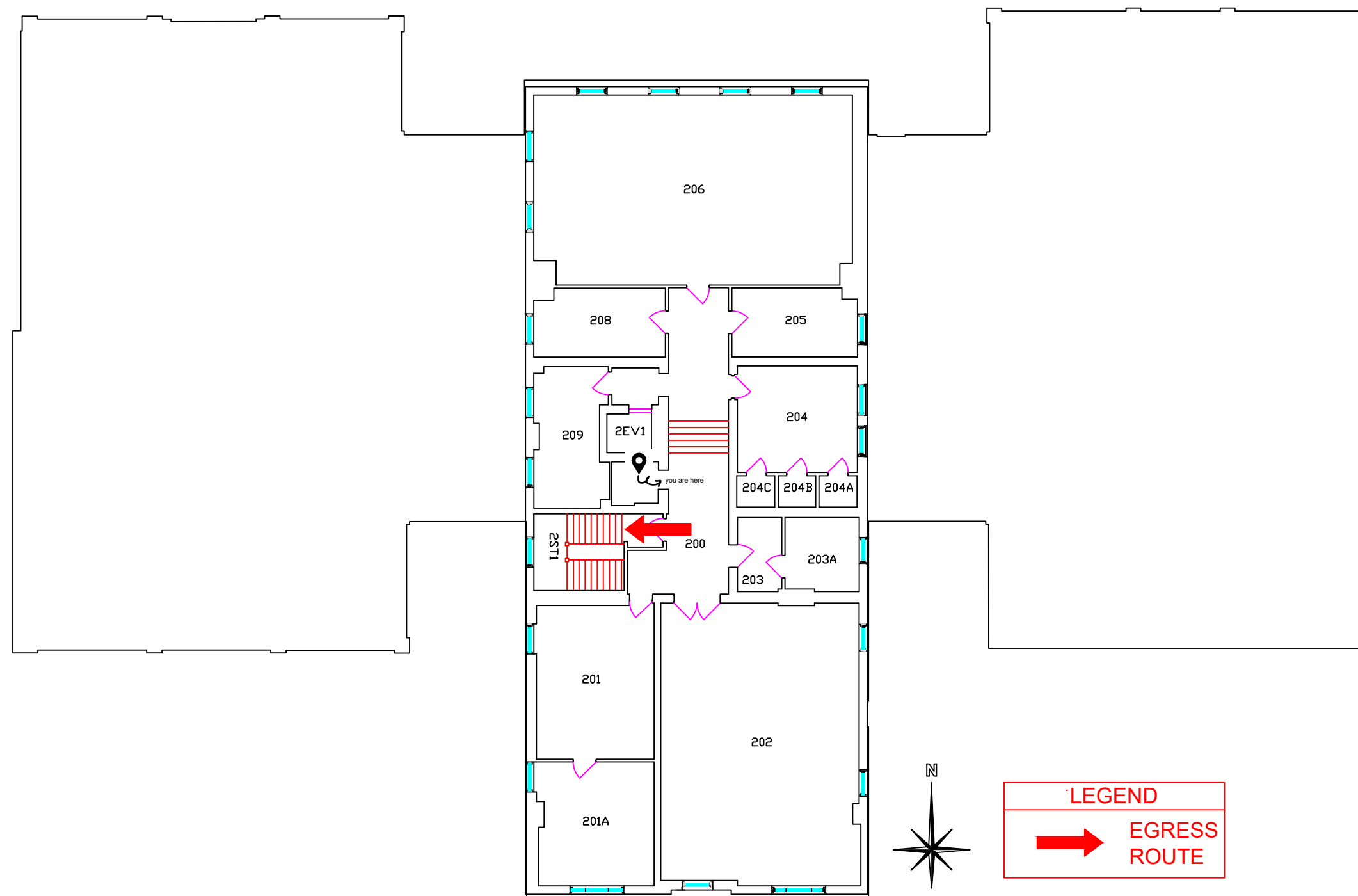


Interdisciplinary Engineering Building

1215 N. Pine St.  
Rolla, MO 65409  
GIS: 37.953986, -91.772028

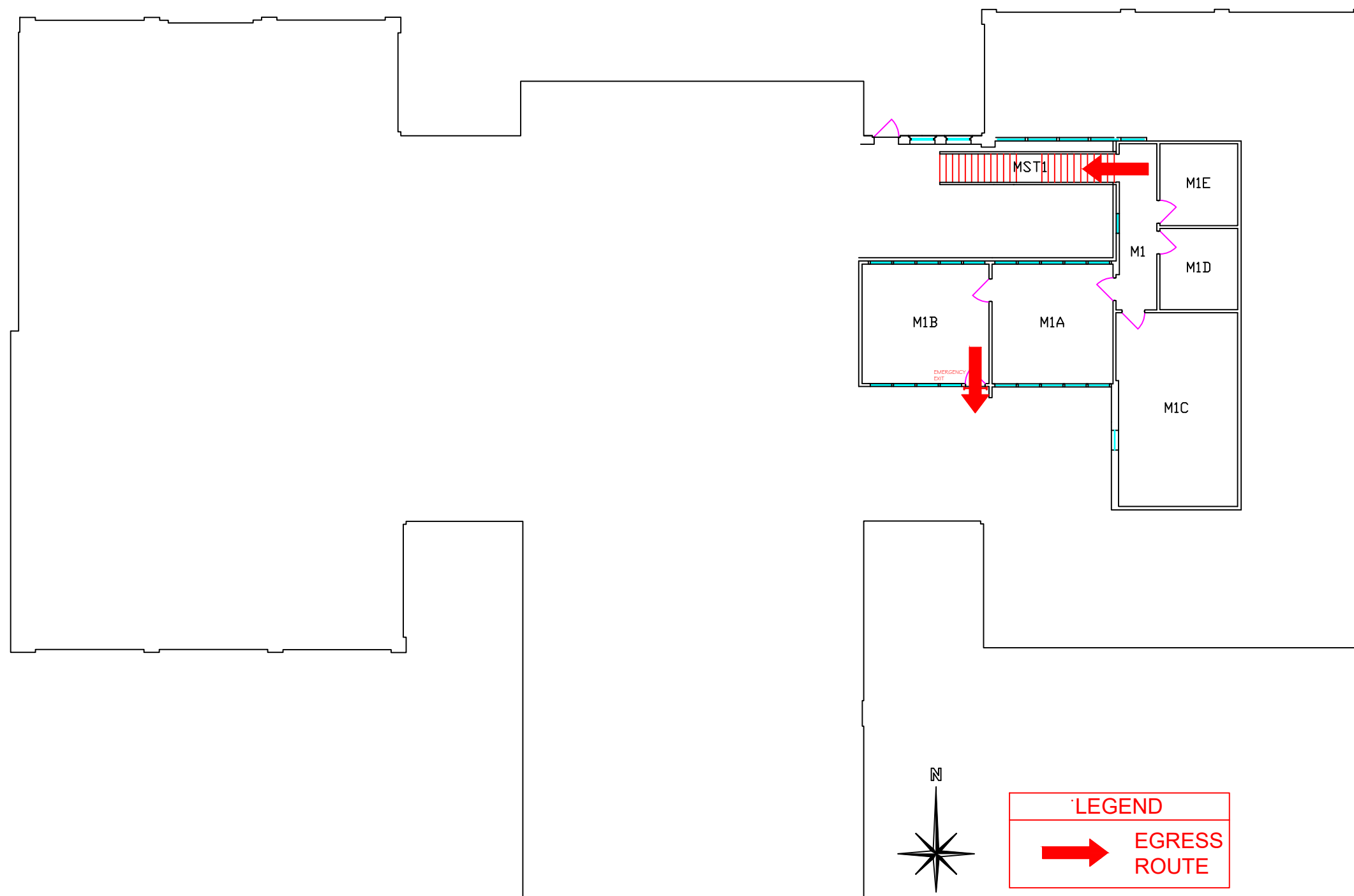
Bldg Code: R0013  
Rev. Date: 07/13/2022  
Sheet Size: Ledger  
Scale: 1/16" = 1'-0"

First Floor  
Sheet 3 of 5



Interdisciplinary Engineering Building

1215 N. Pine St.  
Rolla, MO 65409  
GIS: 37.953986, -91.772028



Interdisciplinary Engineering Building

1215 N. Pine St.  
Rolla, Mo 65409  
GIS: 37.953986, -91.772028